

4

3

2

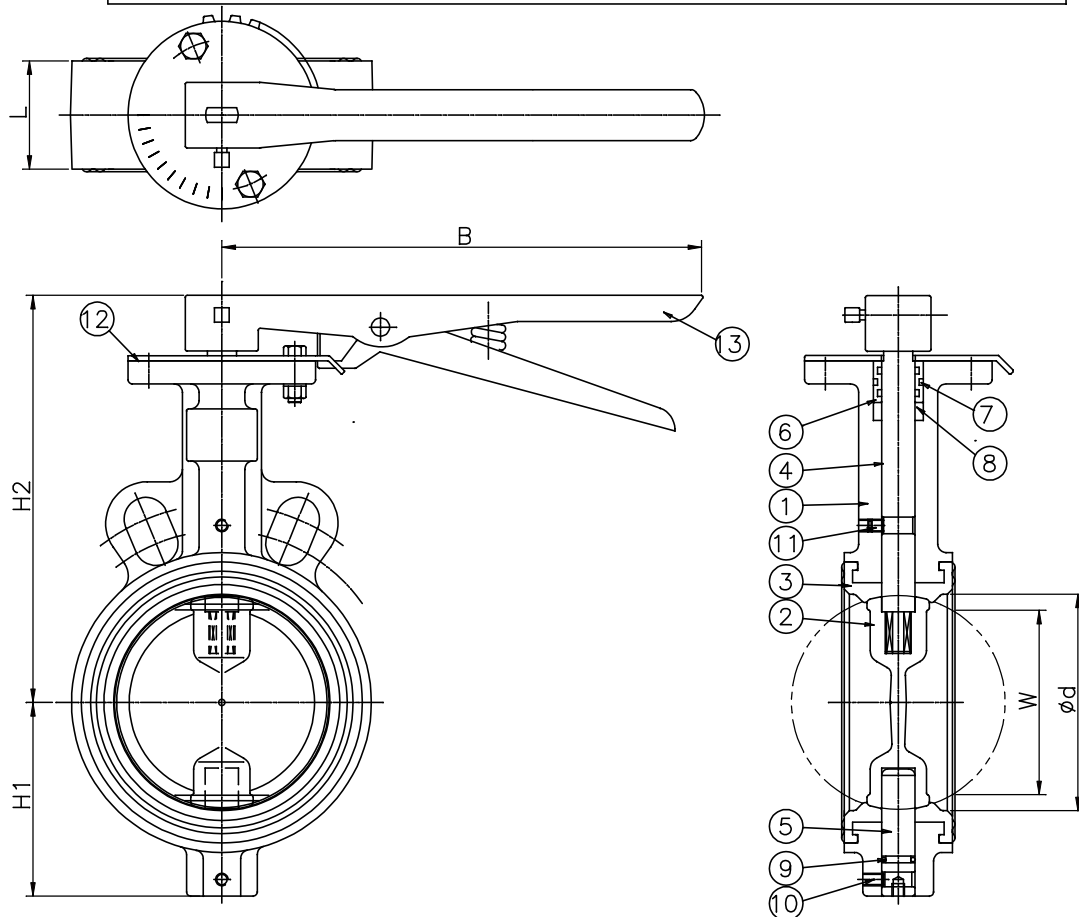
1

D I M E N S I O N S

UNIT: mm

NOMINAL DIAMETER	ød	L	FLANGE		H1	H2	B	W	WEIGHT (KG)
			øC	n-øh					
40(1.5")	40	33			60	155	205	27	2.2
50(2")	50	43			61	158	205	28	2.7
65(2.5')	67	46			73	169	205	51	3.4
80(3")	79	46			80	180	205	67	3.8
100(4")	101	52			93	194	265	89	4.9
125(5")	124	56			113	207	265	113	6.8
150(6")	147	56			126	220	265	139	8.6
200(8")	197	60			157	275	350	191	13.1

FLANGE RATING : MULTI-DRILLING(5K,10K,PN10,PN16,150LB)



P.NO.	PART NAME	MATERIAL	Q'TY	REMARK
1	BODY	A126 C.I.	1	
2	DISC	A351 CF8	1	
3	SEAT RING	EPDM	1	
4	MAIN STEM	A276 T410	1	
5	STUB STEM	A276 T410	1	
6	O-RING HOLDER	ACETAL	1	
7	O-RING	EPDM	2	
8	PACKING	EPDM	1	
9	O-RING	EPDM	1	
10	STOP BOLT	SS400	1	
11	BOLT/O-RING/BOLT	SS400/NBR/SS400	1	1SET
12	INDICATOR	SS400	1	
13	LEVER	ASS'Y	1	

N O T E S

- "W" DIMENSION IS THE MINIMUM ALLOWABLE FLANGE INSIDE DIAMETER OR PIPE INSIDE DIAMETER AT THE CENTERED BODY FACE WHEN IN THE OPEN POSITION
- HYDROSTATIC TEST
-BODY : 24 BAR
-SEAT : 18 BAR
- FACE TO FACE : ISO 5752 SERIES 20

NO.	DATE	DESCRIPTION	DRA.	DES.	CHK.	APP.
0	'06.02.10	FIRST ISSUE				
TITLE WAFER TYPE MULTI-DRILLING LEVER OPERATED BUTTERFLY VALVE						
APP.	CHK.	DES.	DRA.	SCALE	N/S	
				DATE	'06.01.12	
				DWG/N	CRB1E-B-02	
ANC CORPORATION						

4

3

2

1

4

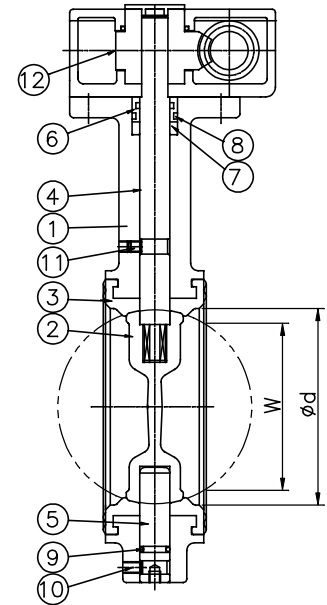
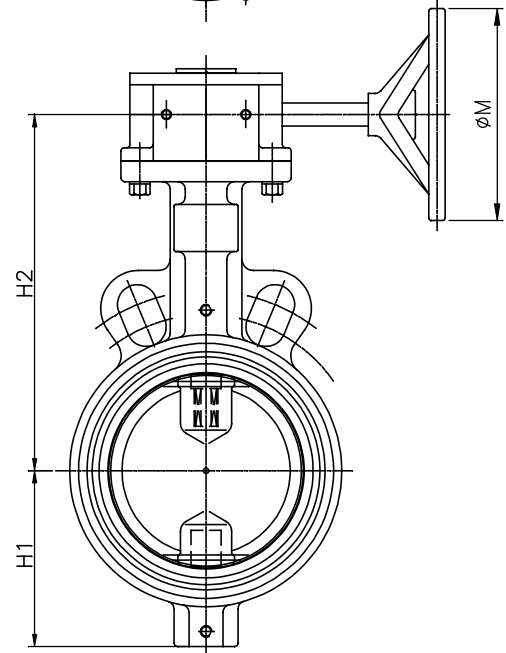
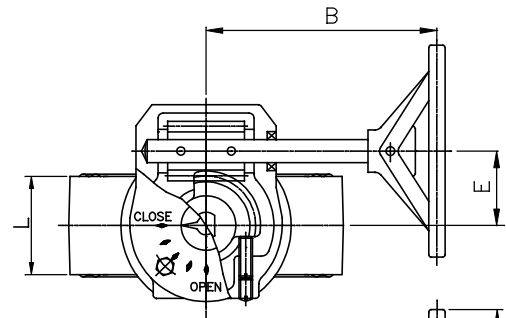
3

2

1

DIMENSIONS											UNIT: mm
NOMINAL DIAMETER	ød	L	FLANGE		H1	H2	B	E	øM	W	WEIGHT (KG)
			øC	n-øh							
50(2")	50	43			61	163	160	44	160	28	6.6
65(2.5')	67	46			73	174	160	44	160	51	7.3
80(3")	79	46			80	185	160	44	160	67	7.7
100(4")	101	52			93	199	160	44	160	89	8.8
125(5")	124	56			113	212	160	44	190	113	10.5
150(6")	147	56			126	225	160	44	190	139	12.3
200(8")	197	60			157	275	220	66	245	191	21.2


FLANGE RATING : MULTI-DRILLING(5K,10K,PN10,PN16,150LB,TABLE-E)



P.NO.	PART NAME	MATERIAL	Q'TY	REMARK
1	BODY	A126 C.I.	1	
2	DISC	A351 CF8	1	CF8M
3	SEAT RING	EPDM	1	
4	MAIN STEM	A276 T410	1	
5	STUB STEM	A276 T410	1	
6	O-RING HOLDER	ACETAL	1	
7	PACKING	EPDM	1	
8	O-RING	EPDM	1	
9	O-RING	EPDM	1	
10	STOP BOLT	SS400	1	
11	BOLT/O-RING/BOLT	SS400/NBR/SS400	1	1SET
12	GEAR BOX	ASS'Y	1	

NOTES

- "W" DIMENSION IS THE MINIMUM ALLOWABLE FLANGE INSIDE DIAMETER OR PIPE INSIDE DIAMETER AT THE CENTERED BODY FACE WHEN IN THE OPEN POSITION
- HYDROSTATIC TEST
-BODY : 24 BAR
-SEAT : 18 BAR
- FACE TO FACE : ISO 5752 SERIES 20

0	'06.02.10	FIRST ISSUE				
NO.	DATE	DESCRIPTION	DRA.	DES.	CHK.	APP.
TITLE		WAFER TYPE MULTI-DRILLING GEAR OPERATED BUTTERFLY VALVE				
APP.	CHK.	DES.	DRA.	SCALE	N/S	
				DATE	'06.01.12	
				DWG/N	CBV-M-G1	
 ANC CORPORATION						

4

3

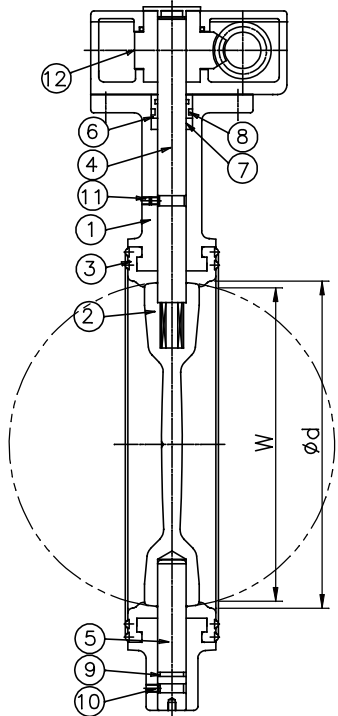
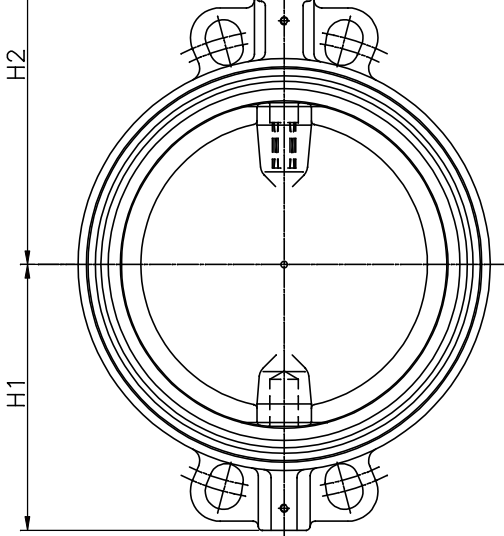
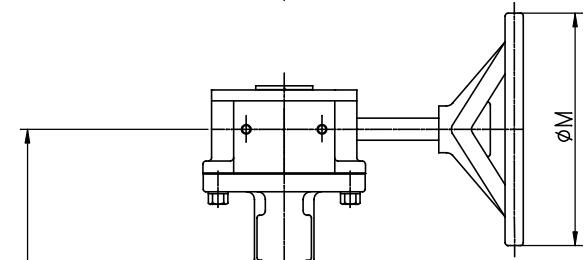
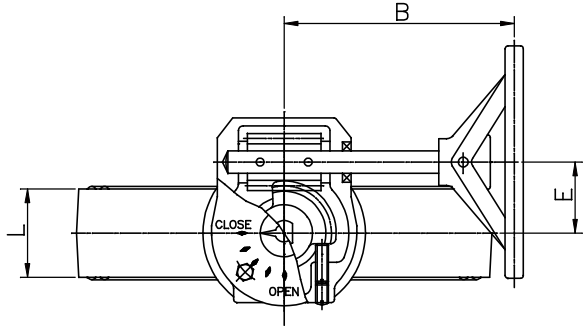
2

1

4 | 3 | 2 | 1

DIMENSIONS											UNIT: mm
NOMINAL DIAMETER	ød	L	FLANGE		H1	H2	B	E	øM	W	WEIGHT (KG)
			øC	n-øh							
250(10")	248	68			205	315	220	66	245	242	27.6
300(12")	297	78			240	350	220	66	285	290	36.0
350(14")	332	78			267	377	250	70	285	325	50.0

FLANGE RATING : MULTI-DRILLING(5K,10K,PN10,PN16,150LB,TABLE-E)



P.NO.	PART NAME	MATERIAL	Q'TY	REMARK
1	BODY	A126 C.I.	1	
2	DISC	A351 CF8	1	CF8M
3	SEAT RING	EPDM	1	
4	MAIN STEM	A276 T410	1	
5	STUB STEM	A276 T410	1	
6	O-RING HOLDER	ACETAL	1	
7	PACKING	EPDM	2	
8	O-RING	EPDM	1	
9	O-RING	EPDM	1	
10	STOP BOLT	SS400	1	
11	BOLT/O-RING/BOLT	SS400/NBR/SS400	1	1SET
12	GEAR BOX	ASS'Y	1	

NOTES

- "W" DIMENSION IS THE MINIMUM ALLOWABLE FLANGE INSIDE DIAMETER OR PIPE INSIDE DIAMETER AT THE CENTERED BODY FACE WHEN IN THE OPEN POSITION
- HYDROSTATIC TEST
-BODY : 24 BAR
-SEAT : 18 BAR
- FACE TO FACE : ISO 5752 SERIES 20

0	'06.02.10	FIRST ISSUE				
NO.	DATE	DESCRIPTION	DRA.	DES.	CHK.	APP.
TITLE		WAFER TYPE MULTI-DRILLING GEAR OPERATED BUTTERFLY VALVE				
APP.	CHK.	DES.	DRA.	SCALE	N/S	
				DATE	'06.01.12	
				DWG/N	CBV-M-G2	



4 | 3 | 2 | 1

4

3

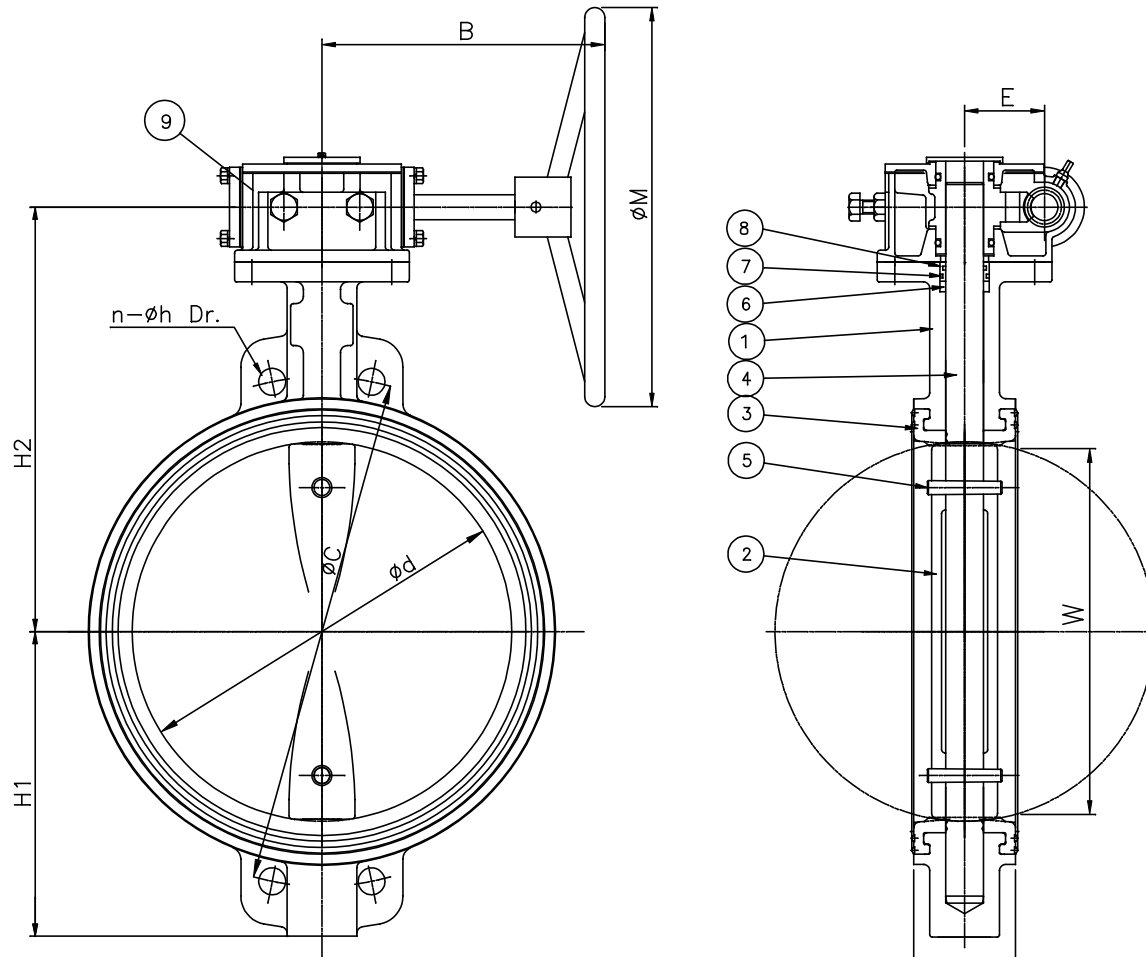
2

1

DIMENSIONS										UNIT: mm
NOMINAL DIAMETER	ød	L	FLANGE		H1	H2	E	B	W	øM
			øC	n-h						
400(16")	376	102	515	16-ø26	305	425	80	300	366	385
450(18")	430	114	565	20-ø26	325	445	80	300	419	385

FLANGE RATING : PN 10 (NOTE : MULTI-DRILLING UPTO DN 400)

P.NO.	PART NAME	MATERIAL	Q'TY	REMARK
1	BODY	A126 C.I.	1	
2	DISC	A351 CF8	1	
3	SEAT RING	EPDM	1	
4	STEM	A276 T410	1	
5	DISC PIN	A276 T304	2	
6	PACKING	EPDM	1	
7	O-RING	EPDM	2	
8	O-RING HOLDER	BRONZE	1	
9	GEAR BOX	ASS'Y	1	



NOTES

- "W" DIMENSION IS THE MINIMUM ALLOWABLE FLANGE INSIDE DIAMETER OR PIPE INSIDE DIAMETER AT THE CENTERED BODY FACE WHEN IN THE OPEN POSITION
- HYDROSTATIC TEST
-BODY : 15 BAR
-SEAT : 11 BAR
- FACE TO FACE : ISO 5752 SERIES 20

0	'06.02.10	FIRST ISSUE				
NO.	DATE	DESCRIPTION	DRA.	DES.	CHK.	APP.
TITLE		WAFER TYPE PN 10 GEAR OPERATED BUTTERFLY VALVE				
APP.	CHK.	DES.	DRA.	SCALE	N/S	
				DATE	'06.01.12	
				DWG/N	CBV-S-G16	



4

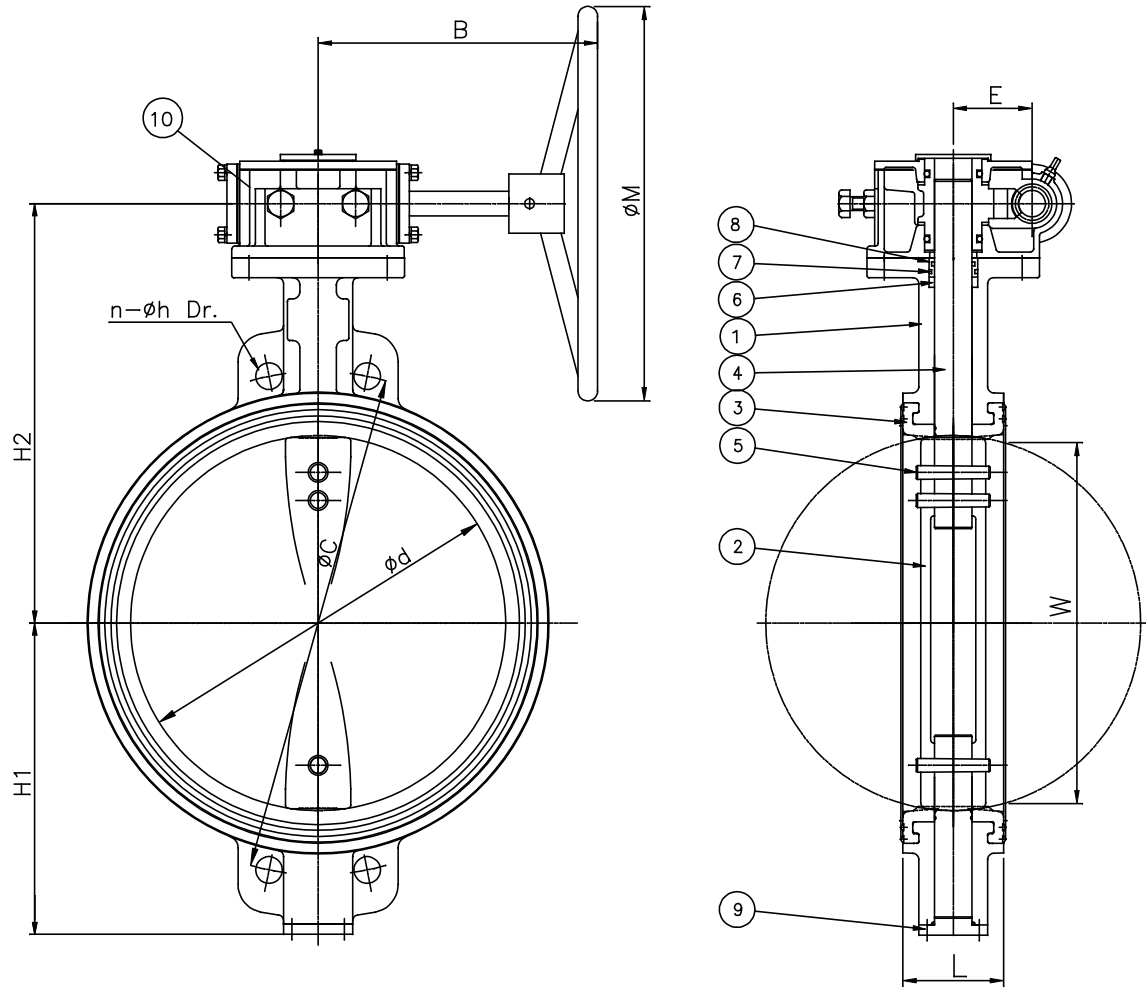
3

2

1

DIMENSIONS										UNIT: mm
NOMINAL DIAMETER	ϕd	L	FLANGE		H1	H2	E	B	W	ϕM
			ϕC	n-h						
500(20")	488	127	620	20- $\phi 26$	360	495	92	300	475	500
FLANGE RATING : PN 10										

P.NO.	PART NAME	MATERIAL	Q'TY	REMARK
1	BODY	A126 C.I.	1	
2	DISC	A351 CF8	1	CF8M
3	SEAT RING	EPDM	1	
4	STEM	A276 T410	1	
5	DISC PIN	A276 T304	3	
6	PACKING	EPDM	1	
7	O-RING	EPDM	2	
8	O-RING HOLDER	BRONZE	1	
9	END COVER	FC200	1	
10	GEAR BOX	ASS'Y	1	



NOTES

- "W" DIMENSION IS THE MINIMUM ALLOWABLE FLANGE INSIDE DIAMETER OR PIPE INSIDE DIAMETER AT THE CENTERED BODY FACE WHEN IN THE OPEN POSITION
- HYDROSTATIC TEST
 -BODY : 15 BAR
 -SEAT : 11 BAR
- FACE TO FACE : ISO 5752 SERIES 20

0	'06.02.10	FIRST ISSUE				
NO.	DATE	DESCRIPTION	DRA.	DES.	CHK.	APP.
TITLE		WAFFER TYPE PN 10 GEAR OPERATED BUTTERFLY VALVE				
APP.	CHK.	DES.	DRA.	SCALE	N/S	
				DATE	'06.01.12	
				DWG/N	CBV-S-G16	

ANC CORPORATION

4

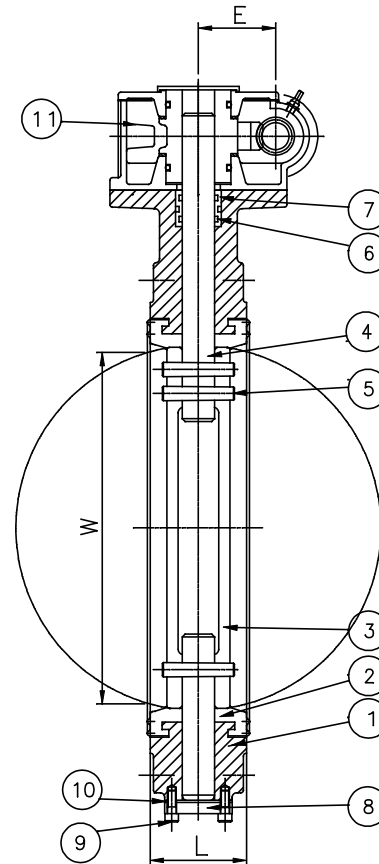
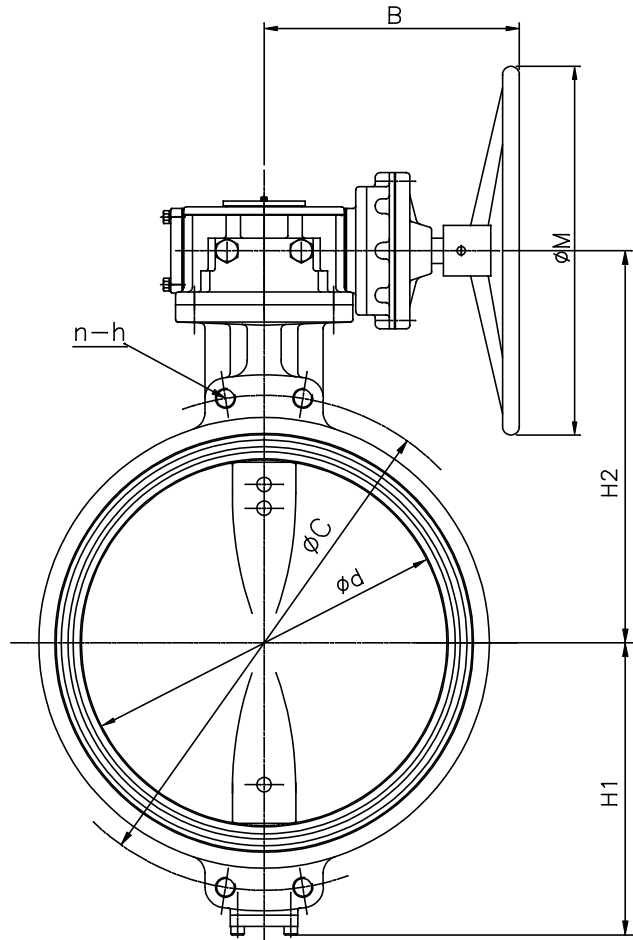
3

2

1

DIMENSIONS										UNIT: mm
NOMINAL DIAMETER	ϕd	L	FLANGE		H1	H2	E	B	W	ϕM
			ϕC	n-h						
600(24")	568	154	725	20-M27	445	560	92	300	552	500
FLANGE RATING : PN 10										

P.NO.	PART NAME	MATERIAL	Q'TY	REMARK
1	BODY	A126 C.I.	1	
2	DISC	A351 CF8	1	CF8
3	SEAT RING	EPDM	1	
4	STEM	A276 T410	1	
5	DISC PIN	A276 T304	3	
6	O-RING	EPDM	3	
7	O-RING HOLDER	BRONZE	1	
8	END COVER	FC200	1	
9	BOLT	SUS304	4	
10	GASKET	EPDM	1	
11	GEAR BOX	ASS'Y	1	



NOTES

- "W" DIMENSION IS THE MINIMUM ALLOWABLE FLANGE INSIDE DIAMETER OR PIPE INSIDE DIAMETER AT THE CENTERED BODY FACE WHEN IN THE OPEN POSITION
- HYDROSTATIC TEST
-BODY : 15 BAR
-SEAT : 11 BAR
- FACE TO FACE : ISO 5752 SERIES 20

0	'06.02.10	FIRST ISSUE				
NO.	DATE	DESCRIPTION	DRA.	DES.	CHK.	APP.

TITLE						WAFER TYPE PN 10
GEAR OPERATED BUTTERFLY VALVE						
APP.	CHK.	DES.	DRA.	SCALE	N/S	A
				DATE	'06.01.12	
				DWG/N	CBV-S-G24	

 **ANC CORPORATION**